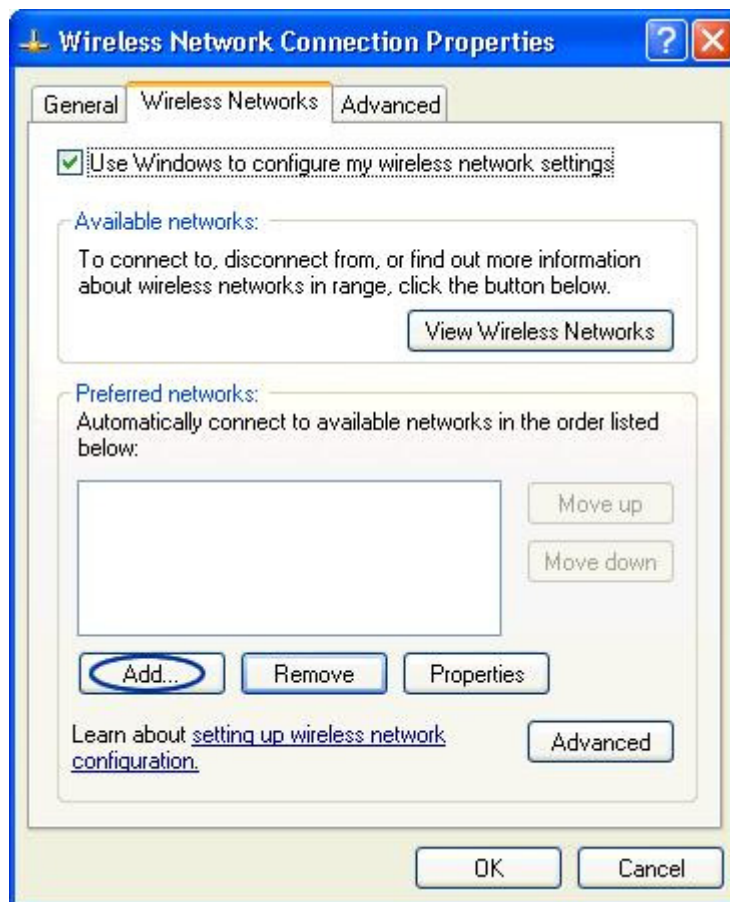




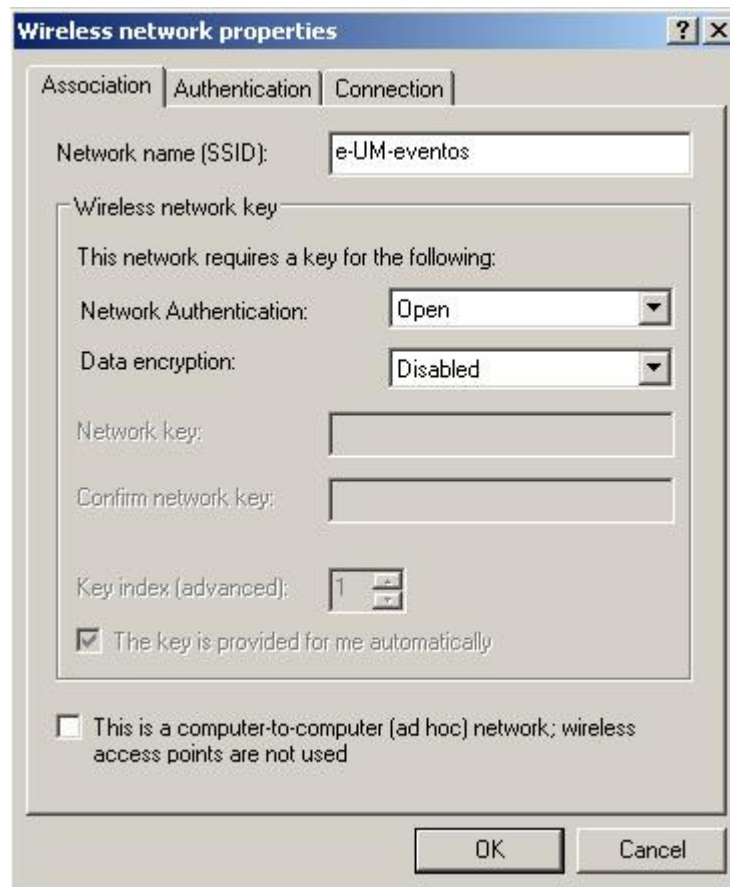
Connection to wireless network

To have wireless connectivity to the Internet you must follow the following steps:

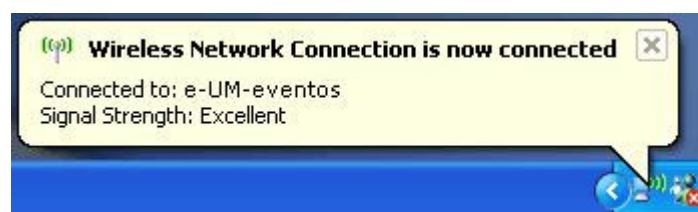
1. Click *Start/Control Panel*.
2. Select *Network Connections*. Find the wireless network card icon, right-click, and select *Properties*.
3. Select the *Wireless Networks* tab. Click *Add*.



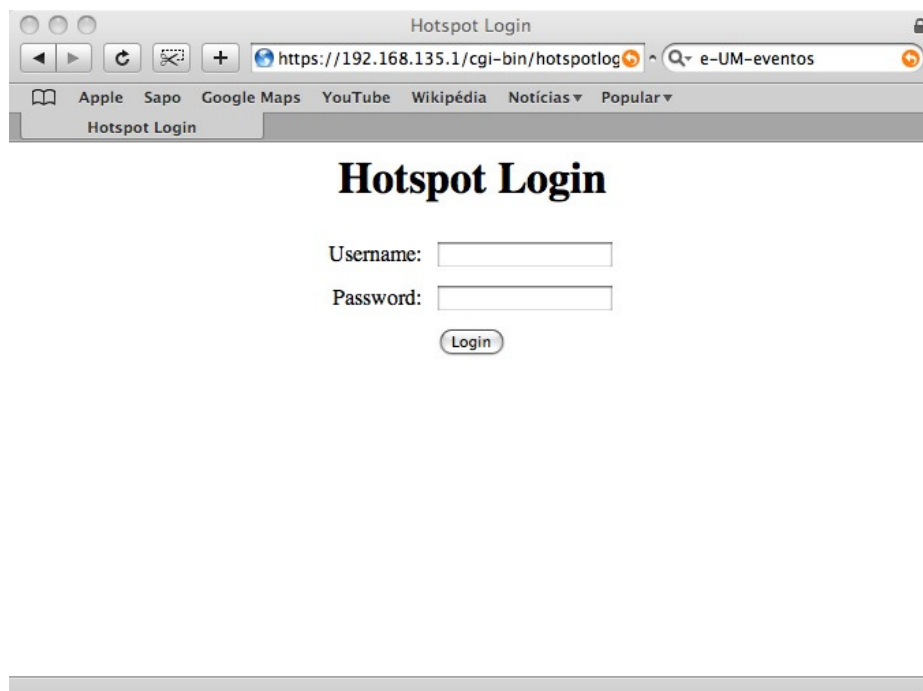
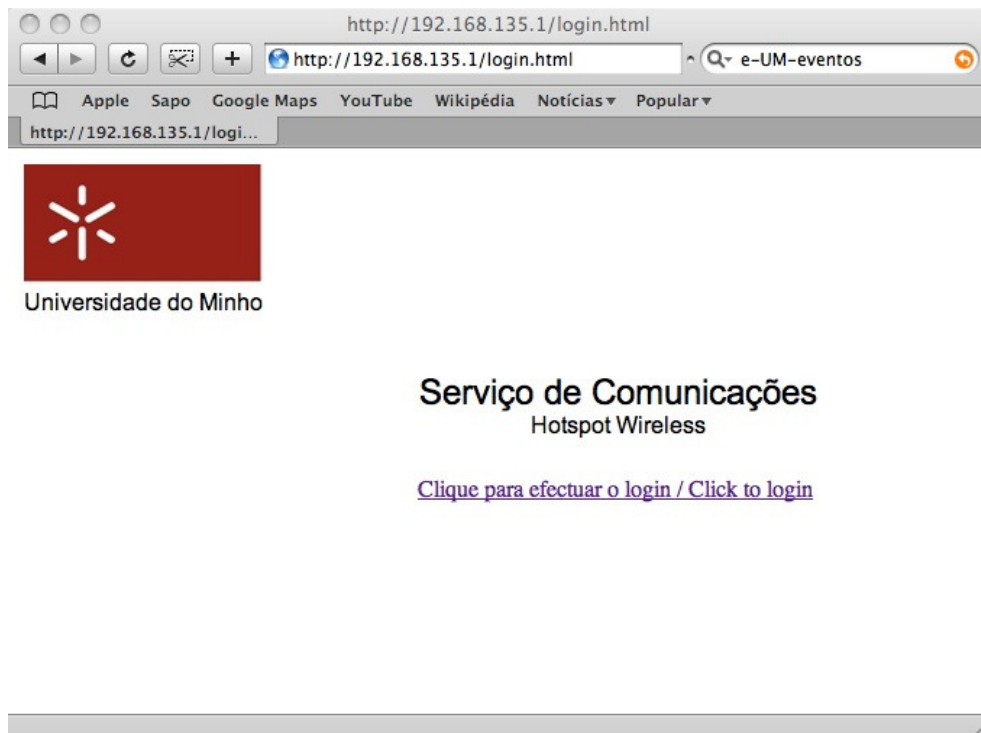
4. The following Picture shows how the wireless network should be added.



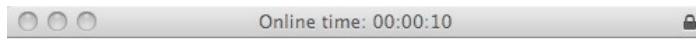
5. Click Ok to close all windows.
6. You are now connected to the “e-UM-eventos” wireless network and can access the Internet.



7. Next, open the Internet *browser*. When you try to access a website you’ll be asked for authentication. Click on “Clique para efectuar o login / Click to login” and introduce the username/password that was previously given to you. You must allow pop-up windows.



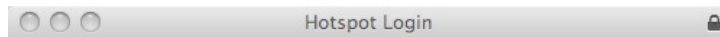
8. After successful authentication, you are redirected to the desired website and a little window appears confirming the connection to the wireless hotspot. Don't close this window.



Logged in to Hotspot

[Logout](#)

9. When you want to logout, click on **logout** (previous picture). The window will show you a confirmation of the successful logout.



Logged out from Hotspot

[Login](#)